

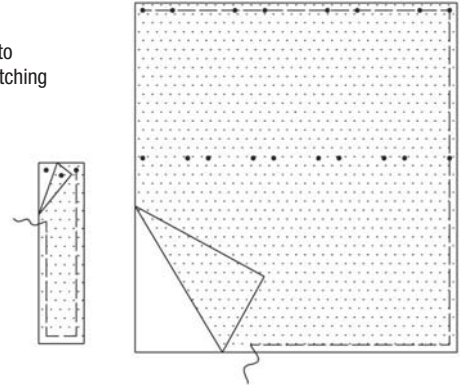
McCALL'S®

FREE PROJECT

TOOL ORGANIZER



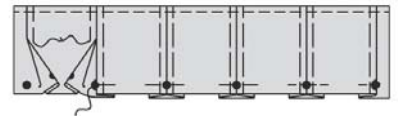
1. Baste INTERFACING to wrong side of each matching FABRIC section, having raw edges even.



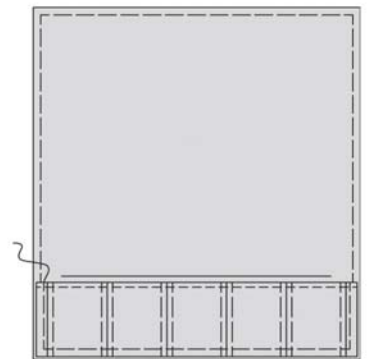
2. Press under 1/4" (6mm) on upper edge of POCKET. Turn upper edge to inside on hemline. Stitch hem in place along pressed under edge.



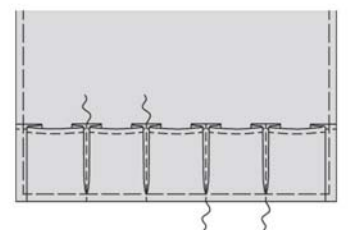
3. To make pleats, crease on line with small circles and bring to line of large circles. Press. Baste across upper and lower edges of pleats.



4. With right sides up, pin pocket to one FRONT AND BACK section at lower edge, matching large circles and having raw edges even. Baste raw edges together.



5. To form pocket sections, remove basting and stitch pockets along stitching line, keeping pleats free.



SUGGESTED FABRICS:

Home Decorating Fabric, Denim, Twill, Ticking

YOU WILL NEED:

Fabric: 45" wide – 1¼ yds.
54" wide – 1½ yds.
60" wide – 7⁄8 yds.

Interfacing: (sew-in): 21-25" wide – 2 yds.

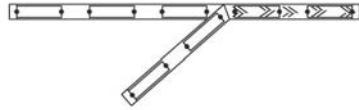
Notions: ¾ yd. of 1" wide webbing
Four 7⁄8" buttons

GENERAL INSTRUCTIONS:

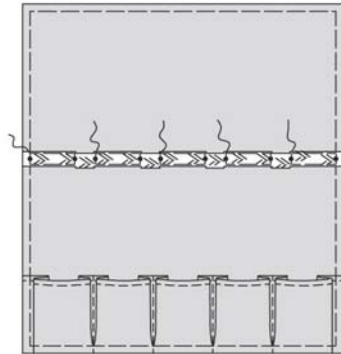
Please read all the instructions before you start your project.
All seam allowances are ½" (13mm) unless otherwise indicated.

TOOL ORGANIZER p2

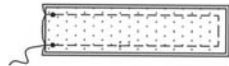
6. For tool carrier, cut a piece of webbing using GUIDE pattern piece. Cut out. Transfer markings.



7. Pin carrier to outside of front and back, placing lower edge of webbing along placement line matching small circles. (Carrier will not lie flat.) Baste along stitching lines.



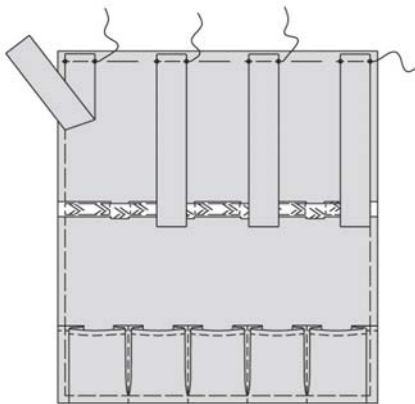
8. For each strap, stitch two STRAP sections together leaving ends with circles free.



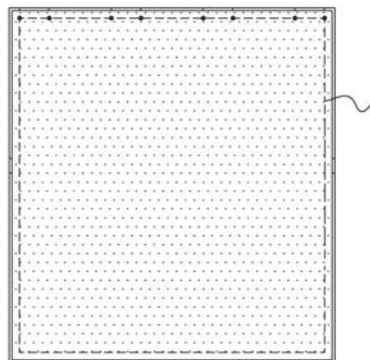
9. Turn right side out. Press.



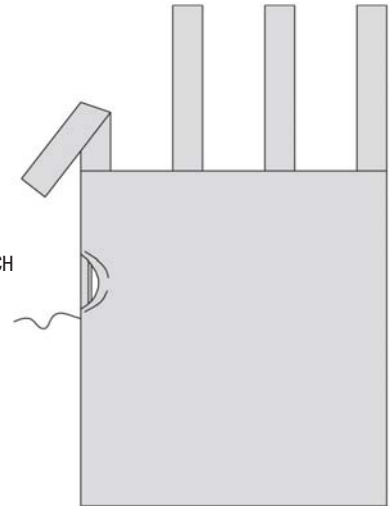
10. Pin straps to upper edge of front and back, matching small circles. Baste.



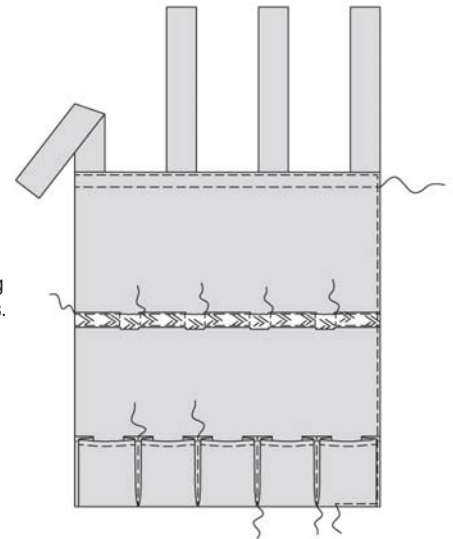
11. Pin front and back sections, right sides together. Stitch, leaving an opening for turning.



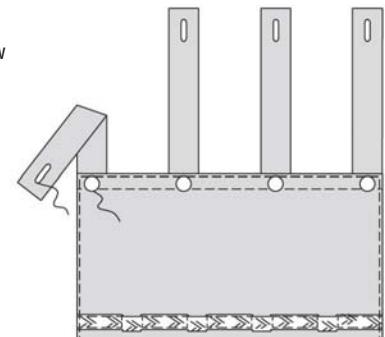
12. Turn right side out. SLIPSTITCH opening edges. Press.

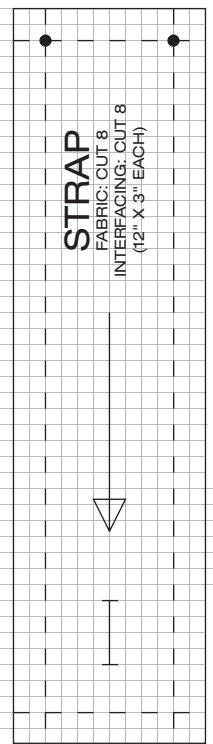
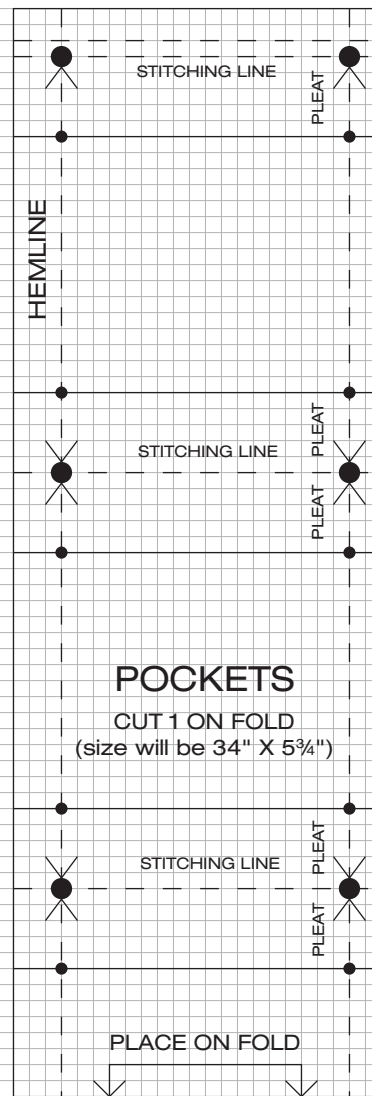
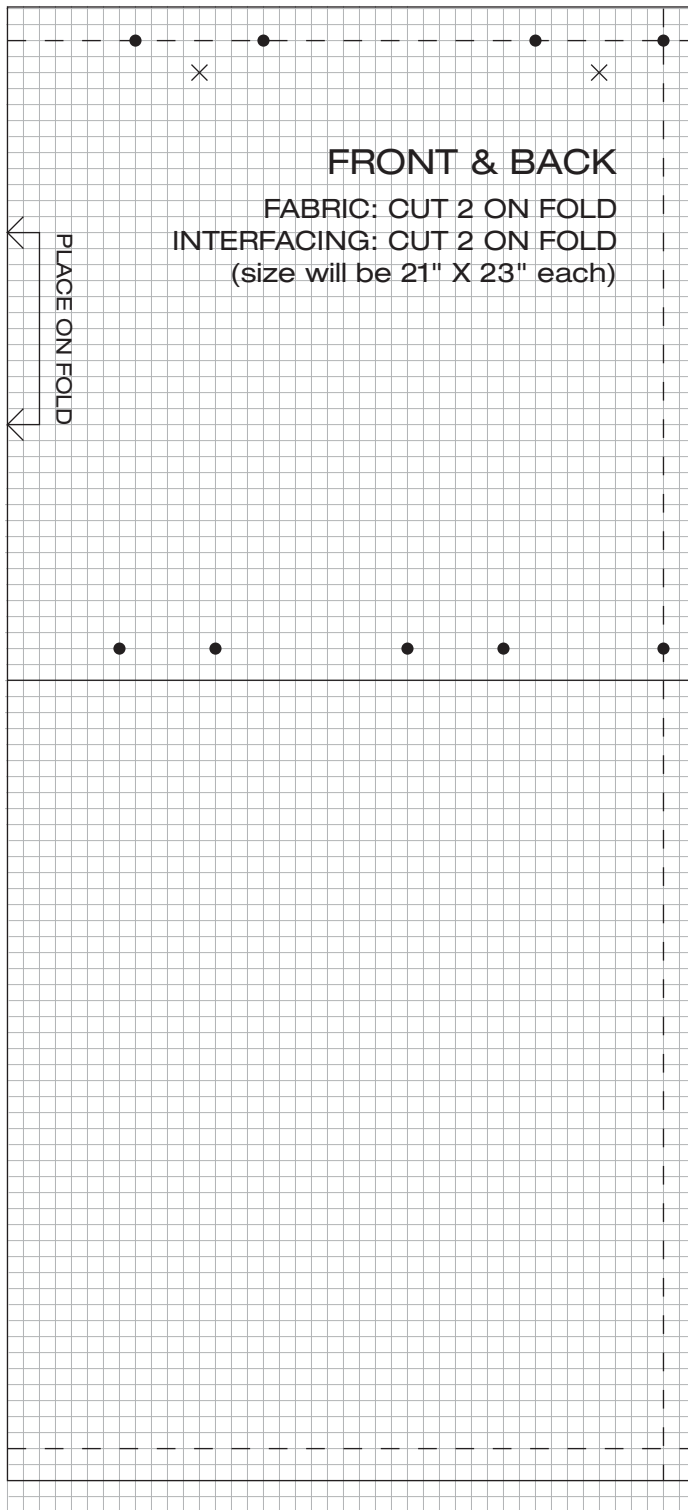


13. Stitch along previous stitching on pocket through all thicknesses. Stitch along basting on carrier. EDGESTITCH outer edges of caddy. TOPSTITCH 1" (2.5cm) from upper edge of caddy.



14. Make buttonholes on ends of straps. Cut buttonholes open. Sew buttons to caddy at markings.





ONE SQUARE = 1/4 INCH