

MCCALL'S

free project

plus size top

Sleeveless pullover top for larger figures with neck and armhole facing in four sizes: S (18W - 20W), M (22W - 24W), L (26W-28W) and XL (30W - 32W).

To determine your correct size, please follow the link

<http://www.mccallpattern.com/charts/bwomen.htm>

SUGGESTED FABRICS:

Lightweight fabrics such as: Challis, Cotton blends, Gauze, Linen Blends, Crepe and Jersey.

YOU WILL NEED:

- 1-5/8" Yds (1.50m) of 60" (150cm) wide fabric
- 1 Yd (90cm) of 25" (64cm) wide fusible interfacing

NOTIONS:

Thread



GENERAL INSTRUCTIONS:

- Please read all the instructions before you get started on your project.
- Enlarge all pattern pieces, as suggested below.
- Pin pattern pieces to corresponding fabric sections. Make sure all the pieces are correctly laid before cutting out the sections.
- Transfer markings.

ENLARGING AND TRACING:

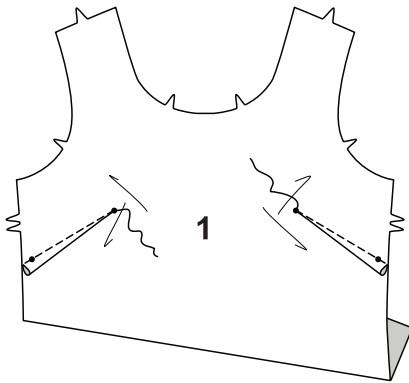
To enlarge the pattern, you can use one of the following methods:

- Trace the pattern pieces directly on the fabric – count each square as 1", draw the lines and cut out along the markings.
- Trace block pieces to Perfect Pattern Paper (available for purchasing on www.mccallpattern.com) or make your own grid paper.
- Put the paper with pattern pieces on a scanner or photocopier and enlarge 400%. You may have to print it in sections and then tape the pages together.

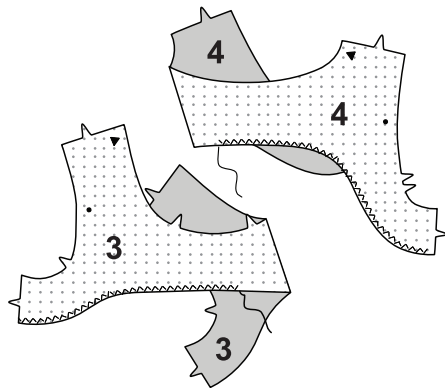
All seam allowances are 5/8" (1.5cm), unless otherwise indicated.

SEWING INSTRUCTIONS

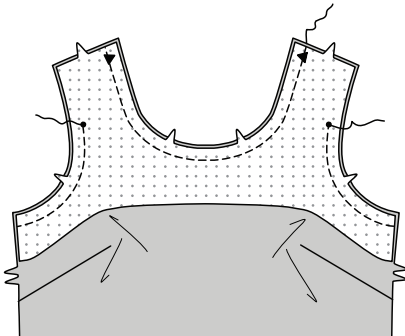
1. Make darts in FRONT (1). Press down.



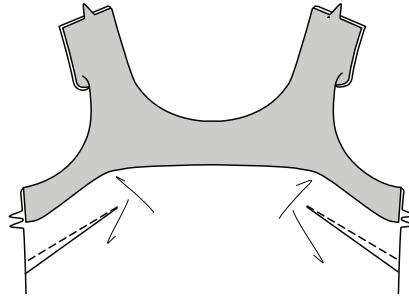
2. Fuse INTERFACING to wrong side of FRONT FACING (3) and BACK FACING (4), following manufacturer's directions. FINISH lower edges.



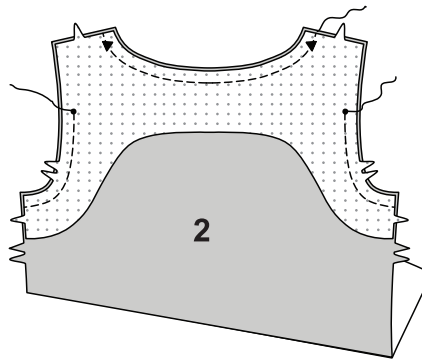
3. With right sides together pin front facing to front, having raw edges even. Stitch neck edge. Stitch armhole edges below small circles. Trim seam allowances, clipping where necessary.



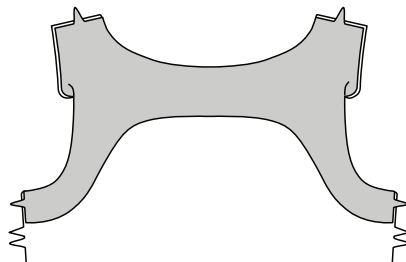
4. Turn facings to inside. Press.



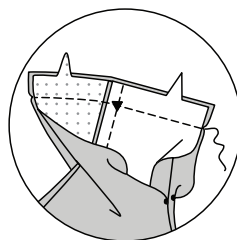
5. With right sides together, pin back facing to BACK (2), having raw edges even. Stitch neck edge. Stitch armhole edges below small circles. Trim seam allowances, clipping where necessary.



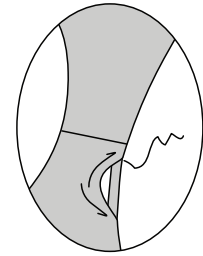
6. Turn facings to inside. Press.



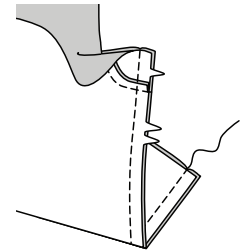
7. Open out facing at shoulders. Pin front and back together, pin facing edges together. Stitch in one continuous seam.



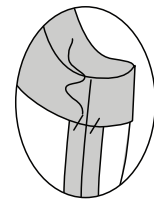
8. Turn facing down, turning in 5/8" (1.5cm) between circles. SLIPSTITCH edges together, press.



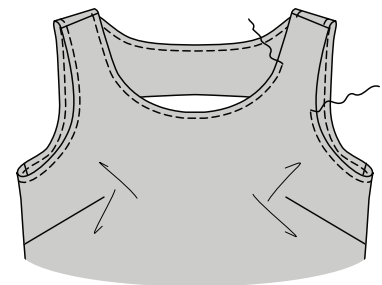
9. Open out facing at sides. Pin front and back together, pin facing edges together. Stitch in one continuous seam.



10. Turn facing down, tack to side seam, as shown.



On outside, TOPSTITCH 1/4" (6mm) from neck and armhole edges.



Make 5/8" (1.5cm) NARROW HEM at lower edge.

